



LIVE PERFORMANCE TOURING SYSTEM

Application Diagram

Live performances demand dozens of audio connections — microphones, wireless systems, playback computers, mixing consoles, and amplifiers driving the PA and stage monitors. These signals must also be split for monitor mixes and sometimes for recording or broadcast feeds, resulting in a complex web of analog cabling.

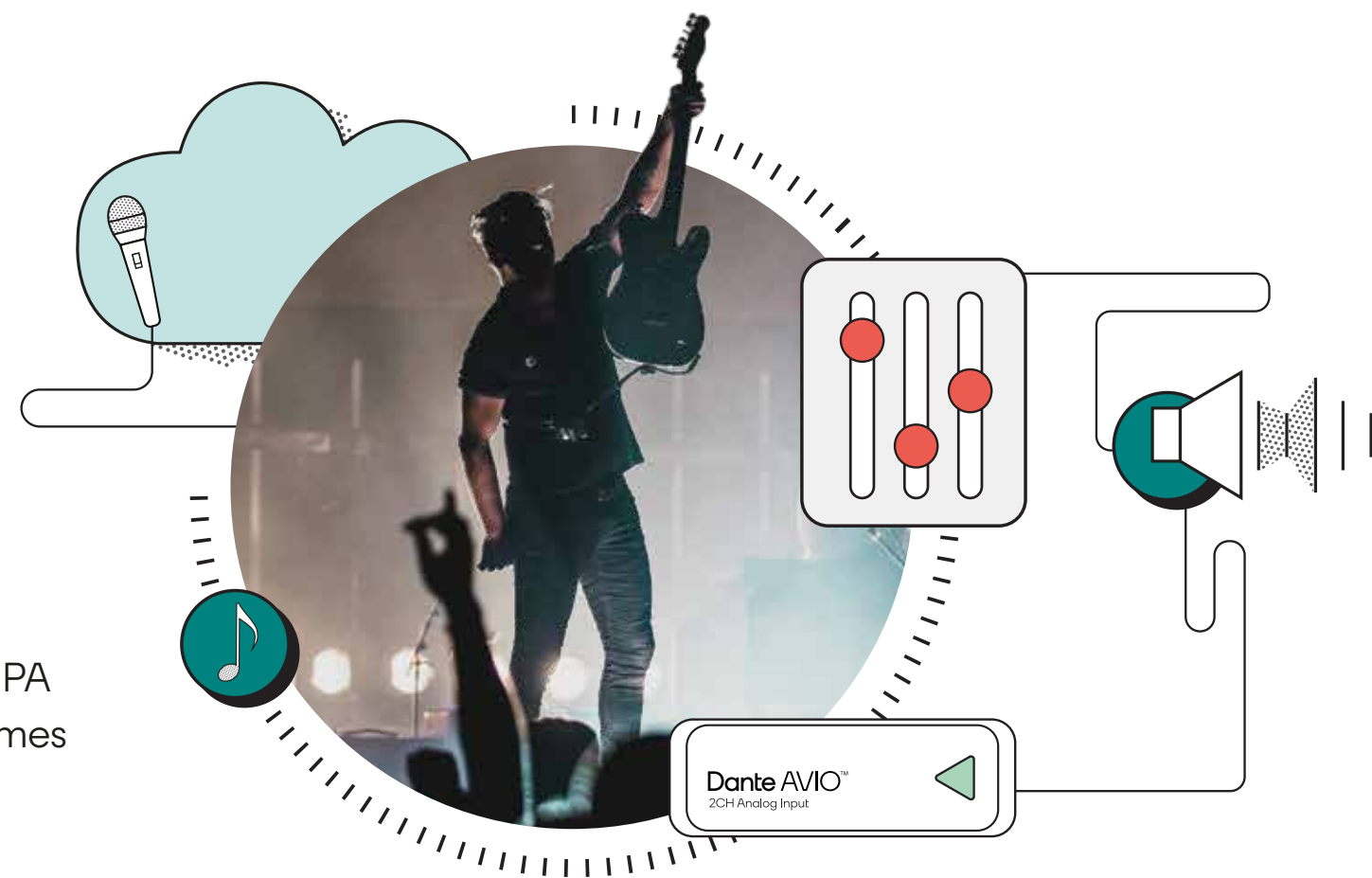
Dante significantly simplifies the audio infrastructure, removing dozens or even hundreds of analog connections. Audio from every device connects over standard Ethernet or fiber cables, with optional secondary connections providing drop-out-free redundancy for mission-critical reliability. Computers connect just as easily with Dante Virtual Soundcard, enabling virtual soundcheck and multitrack recording. By carrying hundreds of channels through a single network cable, Dante systems are faster to set up, easier to expand, and ready for any show.

Dante AV Adds Video to the Mix

Live shows often rely on IMAG (image magnification) and on-stage visuals to enhance the audience experience. With Dante AV encoders and decoders, video from cameras and graphics systems can be routed across the same network as your audio — no need for separate cabling or infrastructure. Whether you're feeding a projector, LED wall, or displays throughout a venue, Dante AV lets you route audio and video together, making it easy to scale and synchronize systems as part of a single, integrated workflow.

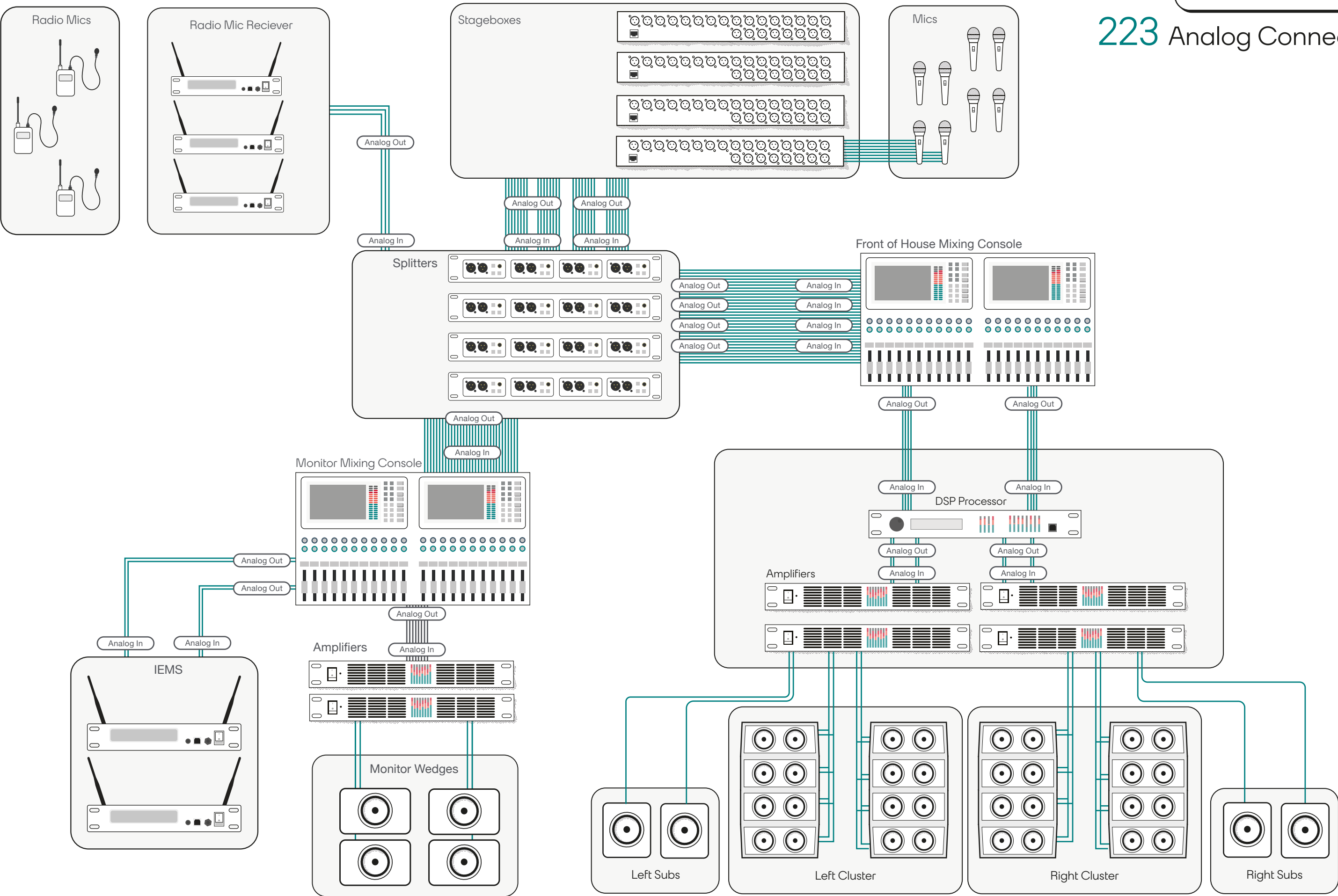
Keep Your Installed System in Check with Dante Director

Performance venues often host visiting acts who bring in their own gear — but that shouldn't put your house system at risk. Dante Director gives you control over who can access what, so touring engineers can patch into what they need without affecting routing for the main PA. At the same time, you can keep critical infrastructure like comms, background music, and paging systems completely off-limits. And because it's cloud-hosted, there's no server to maintain, so you can monitor and manage everything remotely, ensuring your Dante setup always stays performance-ready.



Live Performance Touring System

223 Analog Connections



Live Performance Touring System



24 Data Connections

